

**Sound Control Underlayment**

**DURACOUSTIC**



Duracoustic greatly reduces impact sound and provides a break in the sound transmission path through the floor-ceiling assembly.

Duracoustic, sound control underlayment, is a simple but effective solution to creating floor systems which meet stringent sound ratings in multi-story dwelling (condominiums, hotels, and apartments), private homes and business applications. Duracoustic underlayment is a 5/16" reinforced rubber (recycled) matting with an open cell structure which enhances its sound deadening properties making possible the installation of cost effective sound rated floors.

**TYPICAL CONSTRUCTION APPLICATION**

**PRODUCT DATA**

**THICKNESS / WEIGHT**

Duracoustic – 8mm 166 psf / 130 lbs. per roll

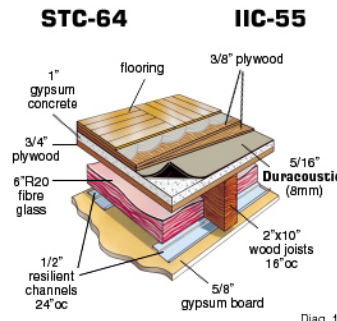
**STANDARD DIMENSIONS**

Available in Rolls  
Duracoustic – 54" wide x 24' ft. (108 sq.ft.)

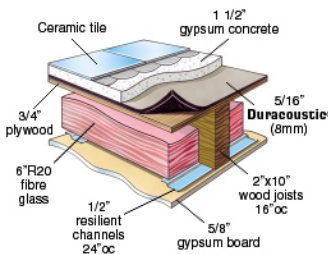
Duracoustic is also available in half rolls, 54" x 12' ( 54 sq.ft.)

**PERFORMANCE**

**Wood Floor / Wood Joist**



**STC-70 IIC-57**



**Ceramic Tile / Wood Joist**

Diagram 2

**STC-55 IIC-52**

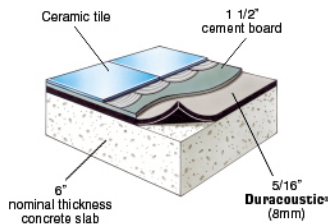


Diagram 3

**Ceramic Tile / Concrete Slab**

**Deflection:**

Pressure (PSF)	Average Deflection (inches)
100	0.027
200	0.046
500	0.090
1000	0.131
2000	0.174
4000	0.221

**Flammability:**

**FF1- 80 ( Pill Test ) Pass**

**ASTM E-648 Radiant Panel Class 1\***

\* Passes the radiant panel Class 1 as an assembly with a Class 1 rated surface material.

**WILREP LTD.**

1515 Matheson Blvd East, Unit C-10 Mississauga, Ontario L4W2P5  
Tel: (905) 625-8944 Fax: (905) 625-7142  
www.wilrep.com E-mail info@wilrep.com