

# UNISORB® LEVEL-RITE® MACHINERY MOUNTS



U.S. PATENT NO. 5,794,912

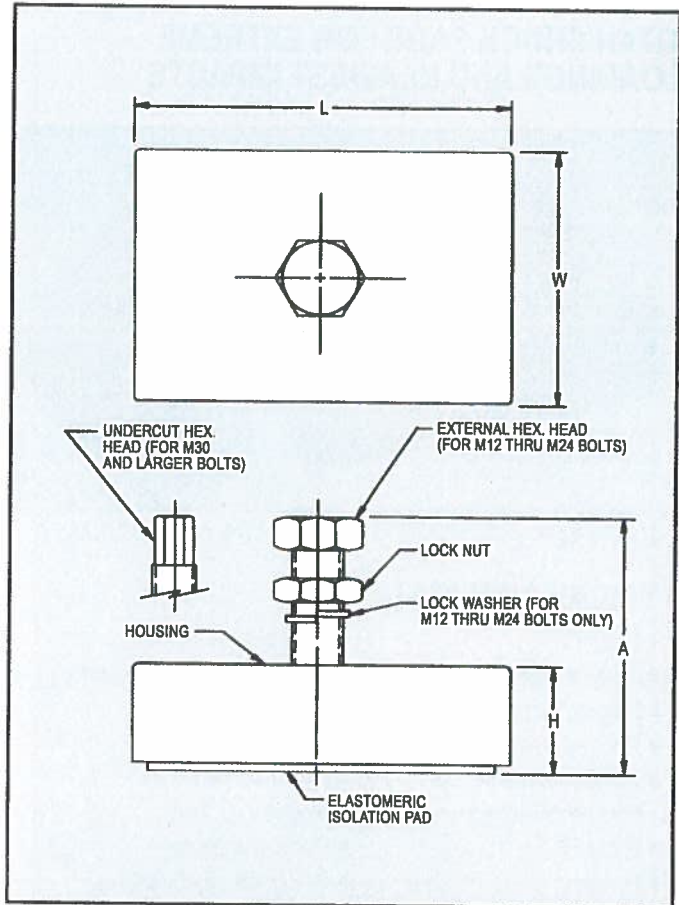
**FULL**  
**1-3/8"**  
**(35mm)**  
**ADJUSTMENT**  
**RANGE**

UNISORB'S line of LEVEL-RITE mounts are superbly engineered, unbreakable, and perfectly suited for general purpose machine leveling and isolation usage. Both the housing and impact plate of the UNISORB LEVEL-RITE mounts are made of ductile iron, conforming to Foundry Spec. 65-45-12. Every UNISORB LEVEL-RITE mount provides an overall height adjustment of 1-3/8 inches (35mm)- well beyond all similar products around the world. Additionally, UNISORB LEVEL-RITE mounts yield optimum performance, even with floors that are uneven.

The isolation pads of all UNISORB LEVEL-RITE mounts are made from proprietary elastomers. The unique internal design eliminates the interdependence between vertical and horizontal stiffness found in other mount designs. This unique design ensures that each mounting point presents consistent vertical and horizontal load deflection characteristics, regardless of adjustment height. LEVEL-RITE mounts are unmatched in controlling extreme machine induced dynamic loads, thus eliminating excessive machine motion and preventing failures typical of most other general purpose mounts.

The LEVEL-RITE mount features a high strength, grade 5 hex. head adjusting bolt that will withstand punishment which would shear off most other bolts. LEVEL-RITE mounts feature adjusting bolts with metric threads. The finer thread pitch provides greater accuracy in adjustment. Special bolt lengths and configurations are available on request.

The rectangular shape of the UNISORB LEVEL-RITE mounts provides another important advantage. While providing greater resistance to walking than circular mounts, the straight leading edge surface on the rectangular mounts has proven to be more geometrically stable. This helps eliminate pad roll and entrapment of coolants and oils beneath



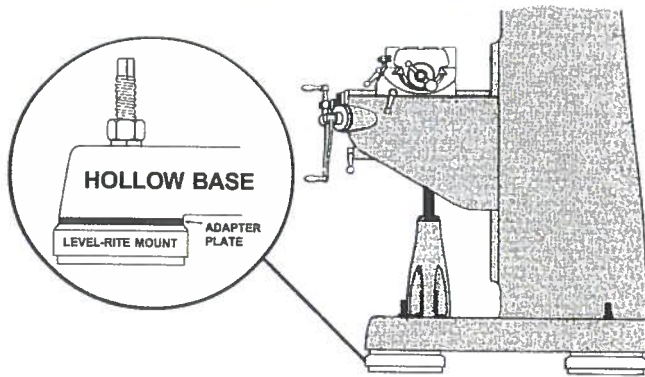
the pad. The exceptionally high coefficient of friction provided by these elastomeric pads also prevents machine walking.

Mount loadings are expressed in pounds and kilograms as shown in the chart below. To determine the approximate load applied by a particular machine, divide the total weight by the number of mounting points. Note that in certain cases, where weight distribution may load one or more mounts significantly more than others, special consideration is required. When machinery generating high impact is being mounted, reduce the mount rating by 25% to assure maximum performance.

SPECIFICATIONS									
LEVEL-RITE MOUNT	PRODUCT CODE	MAX. LOAD lbs./kg	A in./mm	L in./mm	W in./mm	H		STANDARD BOLT SIZE	MAX. MACH. FOOT TH. in./mm
						in.	mm		
LR-2500	574200	2500/1136	7.78/198	5.50/140	3.50/89	2.50/3.88	64/99	M12 x 1.75 x 150	2.27/58
LR-5000	574300	5000/2273	7.77/197	7.00/178	4.50/114	2.50/3.88	64/99	M16 x 2 x 150	2.08/53
LR-7500	574400	7500/3409	7.88/200	8.00/203	5.00/127	2.50/3.88	64/99	M20 x 1.5 x 150	1.91/49
LR-12000	574500	12000/5455	9.94/252	8.00/203	5.88/149	2.50/3.88	64/99	M24 x 2 x 150	3.65/93
LR-16000	574600	16000/7273	10.32/262	10.00/254	7.88/200	3.25/4.62	83/117	M24 x 2 x 150	3.40/86
LR-25000	574700	25000/11364	10.74/273	12.50/318	9.00/229	3.50/4.88	89/124	M30 x 2 x 200	3.53/90
LR-35000	574800	35000/15909	11.09/282	16.00/406	12.50/318	4.50/5.88	114/149	M36 x 2 x 250	4.52/115

For mounts with higher load capacities contact UNISORB Engineering.

**LEVEL-RITE® MACHINERY MOUNTS  
FOR HOLLOW BASE MACHINES**



Designed for hollow bases as found on certain models of mills, lathes, grinders and other machines. Provides vibration control, leveling and support.

Kit includes mounts with special length adjusting screws and adapter plates. Specify distance between bolt holes when ordering. Standard kits accommodate these distances:

- BP-2500 Kit 19.25" - 20.75" (489 mm - 527 mm)
- BP-5000 Kit 23.25" - 24.75" (591 mm - 629 mm)
- BP-5000S Kit 25.25" - 26.75" (641 mm - 679 mm)

Other spacings are available on request.

**LR-200 AND LR-500**



The LR-200 and LR-500 are designed for lighter equipment applications. The LR-200 is for loadings up to 250 lbs. (114 kg) per mount and the LR-500 is for up to 500 lbs. (227 kg). Both models have steel bases, elastomeric isolation pads, and built-in leveling screws.

**R SERIES**

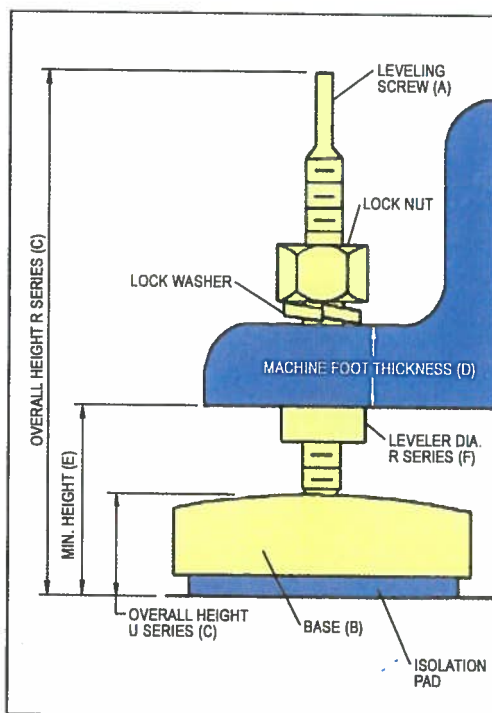


The R Series are self-contained leveling mounts with 1/2" (12.7mm) thick elastomeric pads for all types of machinery. Rugged cast iron and anodized steel construction with a free-floating leveling screw offer vertical adjustments of up to 2" (50mm). They will also compensate for pitched or uneven floors.

**U SERIES**



The U Series self-contained mounts with elastomeric pads are designed to accept machinery leveling screws and are supplied without leveling accessories. Their rugged, heavy duty construction is designed for precision and finishing equipment.



**SPECIFICATIONS**

MODEL	MAX LOAD lbs./kg	A	B in./mm	C in./mm	D in./mm	E in./mm	F in./mm
LR-200	250/114	5/16-18	2.13/54 DIA.	3.50/89	2.50/64	.56/14	1.25/32
LR-500	500/227	3/8-16	3.50/89 DIA.	4.50/114	2.75/70	.63/16	2.50/64
R9	900/409	M12x1.75	3x3/76x76	7.00/178	2.75/70	1.75/44	1.75/44
R16	1600/727	M16x2	4x4/102x102	7.00/178	2.75/70	1.75/44	1.75/44
R28	2800/1273	M16x2	4x4/102x102	7.00/178	2.75/70	1.75/44	1.75/44
R36	3600/1636	M24x3	6x6/152x152	7.50/191	2.75/70	2.63/67	2.25/57
R48	4800/2182	M16x2	4x4/102x102	7.00/178	2.75/70	1.75/44	1.75/44
R100	10800/4909	M24x3	6x6/152x152	7.50/191	2.75/70	2.63/67	2.25/57
U9	900/409	-	3x3/76x76	1.00/25	-	-	-
U16	1600/727	-	4x4/102x102	1.00/25	-	-	-
U28	2800/1273	-	4x4/102x102	1.00/25	-	-	-
U36	3600/1636	-	6x6/152x152	1.50/38	-	-	-
U48	4800/2182	-	4x4/102x102	1.00/25	-	-	-
U100	10800/4909	-	6x6/152x152	1.50/38	-	-	-