

# UNISORB® RK FIXATOR® ANCHORING/ALIGNMENT SYSTEM

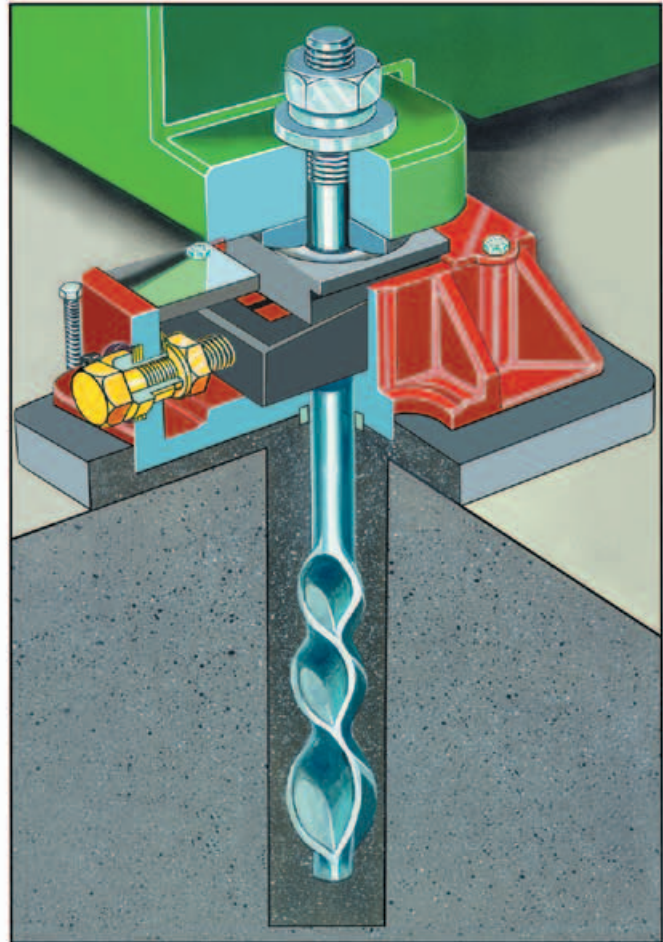
Note: All Fixator information in this catalog pertains to machine tool applications. Call UNISORB about the use of Fixators for Power Generation equipment

RK FIXATOR SYSTEMS level and align machinery to tolerances of 0.0001" (0.0025mm), and make it possible to vary adjustments at any time, even under maximum loads requiring only a small hand wrench to adjust. Time consuming work and production losses normally associated with alignments are eliminated.

While affording the most rigid machine-to-foundation connection available, other benefits include a built-in compensation for uneven areas in foundations and machine bases. True vertical lift, made possible by a 3-piece wedge design to eliminate lateral movement as machines are raised or lowered, makes the RK FIXATOR the state of the art anchoring/alignment system.

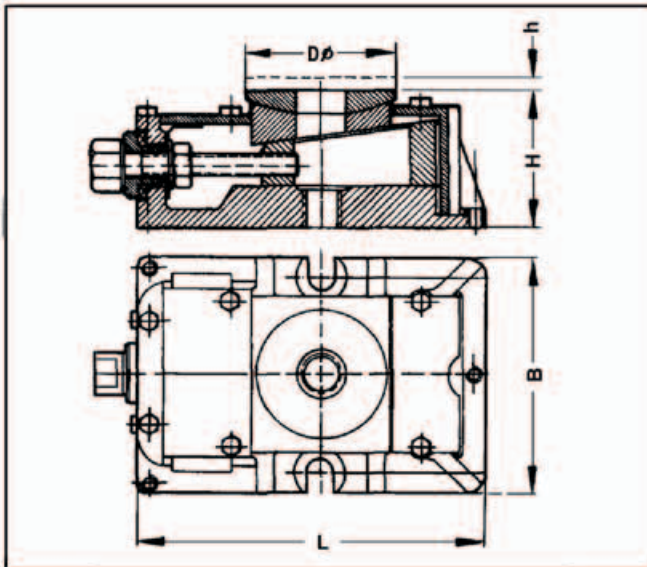
## INTEGRATED SYSTEM DESIGN

Though similar in appearance to conventional wedge-type leveling equipment, RK FIXATOR SYSTEMS differ significantly in concept and application. The RK FIXATOR is not a conventional leveling wedge system, and should not be treated as one. **Alignment adjustments are made after anchor nuts have been tightened.** In this way, the anchor bolts are tightened uniformly to predictable stress levels by adjusting the RK FIXATOR basic unit upward prior to the final alignment procedure, eliminating the customary torquing of anchor nuts. This gives substantial savings in time and effort normally required for the installation of sophisticated machine tools.



## RK FIXATORS SAVE MONEY BY:

- Allowing faster completion of new installations
- Decreasing frequency of, and shorten time required for future realignments
- Maintaining machine accuracy for longer time periods
- Decreasing required maintenance
- Ensuring maximum machine productivity



## BASIC DIMENSIONS

MODEL NO.	D ø in./mm	L in./mm	B in./mm	H in./mm	h in./mm
RKI	2.36/60	6.89/175	4.13/105	2.17/55	.20/5
RKII	2.95/75	7.01/178	4.72/120	2.95/75	.20/5
RKIII	3.54/90	8.66/220	5.91/150	3.74/95	.24/6
RKIV	4.33/110	10.83/275	7.09/180	4.53/115	.31/8
RKV	5.91/150	13.58/345	9.06/230	5.31/135	.39/10
RKVI	7.87/200	16.54/420	10.63/270	6.50/165	.51/13

## LOAD RANGES (PER MOUNT)

MODEL NO.	*RECOMMENDED MACHINE DEAD WEIGHT lbs./N	MAXIMUM ALLOWABLE LIFTING LOAD lbs./N
RKI	2200/10000	20000/90000
RKII	4400/20000	26500/120000
RKIII	8900/40000	53500/240000
RKIV	13400/60000	80500/360000
RKV	26900/120000	157000/700000
RKVI	44900/200000	224500/1000000

\*Contact UNISORB Engineering for application assistance.

For RK Fixator options and other detailed information see our UNISORB Fixator System Catalog available at [www.unisorb.com](http://www.unisorb.com).