

Tectum Acoustic Wall & Ceiling Panels

Tectum Acoustic Panels are an ideal choice where walls and ceilings are subject to abuse and noise is a problem.



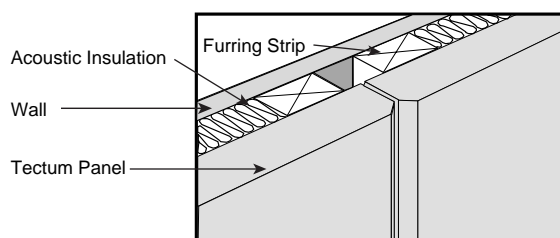
Also Available with a White Finish



Class Room Application

INSTALLATION

It is recommended that Tectum™ used as wall panels be installed on wood or metal furring strips. Adding acoustic insulation between the furring strips will improve overall performance. All exposed panels edges should be beveled for best appearance.



Tectum™ Acoustic Panels combine unique textured appearance with unusual durability. Feature include excellent sound absorption, lightweight structural strength and Class A/1 flame spreading rating. The use of Tectum™ is very cost effective for a multitude of interior applications.

Tectum™ Panels are made of aspen wood fibers bonded with an exclusive hydraulic cement binder. Few, if any other acoustical products can take the repeat abuse that Tectum™ can and still retain their good looks and structural integrity.

Tectum™ Acoustic Panels are easy to install on walls with conventional wood or drywall tools. Ceiling installations use standard grid suspension components. The natural or factory painted white panels provide a decorative interior finish. They can be field painted to match color schemes without losing acoustical efficiency.

FEATURES

- Reduces noise - NRC up to 1.00
- Class A/1 Flame Spread Rating
- Durability - Tough abuse resistance
- R-Value - 1.75 / in.
- Can be field painted - for best result use an alkali-stable flat latex base paint spray applied (approx. 300 sq. ft. per gallon).
- Easy to install - Wide variety of uses.
- Economical
- No asbestos is used in Tectum

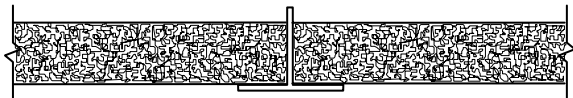
AVAILABLE SIZES

Panel Type	Thickness (Inches)	Actual Sizes (Inches)
Tectum Wall Panels		
Standard Panels	1, 1½, 2	23¾, 31¾, 47¾ X 72 to 144" in 12" increments
Edge Detail - Long Edges Bevelled		
Tectum Ceiling Panels		
Standard Tiles	1, 1½, 2 1½	23¾ X 23¾ or 47¾ 47¾ X 47¾
Edge Detail - Square Edges		

TECTUM ACOUSTICAL PERFORMANCE

	125	250	500	1000	2000	4000	NRC	MOUNTING
PANEL TYPE								
TECTUM™ WALL PANELS								
1"	.06	.13	.24	.45	.82	.64	.40	A
1"	.07	.15	.36	.65	.71	.81	.45	D-20
1"	.16	.43	1.00	1.05	.79	.98	.80	C-20
1"	.32	.70	1.09	.93	.76	.94	.85	C-40
1½"	.07	.22	.48	.82	.64	.96	.55	A
1½"	.15	.26	.62	.83	.70	.91	.60	D-20
1½"	.24	.57	1.17	.87	.93	.87	.90	C-20
1½"	.40	.84	1.18	.84	.94	.88	.95	C-40
2"	.15	.26	.62	.94	.64	.92	.60	A
2"	.15	.36	.74	.82	.82	.92	.70	D-20
2"	.42	.89	1.19	.85	1.08	.94	1.00	C-40
TECTUM™ CEILING TILE								
1" X 24" X 24" Lay-in	.40	.42	.35	.48	.60	.93	.45	E-400
1½" X 24" X 24" Lay-in	.44	.43	.33	.49	.66	.77	.50	E-400
2" X 24" X 24" Lay-in	.48	.46	.36	.55	.74	.79	.55	E-400

MOUNTINGS



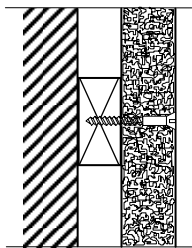
E-400

Lay-in ceiling tiles installed in standard grid suspension components.



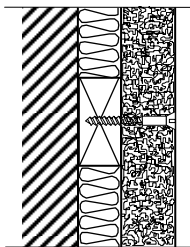
A

Tectum™ panel installed directly against wall.



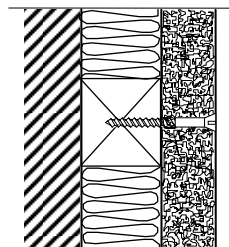
D-20

Tectum™ panel installed on 3/4" furring strips.



C-20

Tectum™ panel installed on 3/4" furring strips with 1" acoustic insulation



C-40

Tectum™ panel installed on 1-1/2" furring strips with 2-1/2" noise batts.

LIMITATIONS

Tectum acoustical panels can be used over swimming pools and in open construction such as breeze-ways and open garages. However, they should not be installed where they will come in direct contact with water or condensation.

One inch thick panels over 23-3/4" x 47-3/4" size should not be used where the relative humidity will exceed 85%. Panels thicker than 1" are not restricted by humidity

TOLERANCES

Tectum Ceiling & Wall Panels width and length, plus zero minus 1/8", over 4' length is plus 1/8" to 1/4". Thickness is nominal, plus zero minus 3/32". Panels that are to be butted must be beveled and may require field fitting.

WILREP LTD. is continually upgrading the quality of our products. We reserve the right to make changes to this and all products without notice.

Technical data for the Tectum™ Panels last updated: January 2014.